



push-fit pipe connectors

the easiest way to join polyethylene pipes

Hawle push-fit pipe connectors are fast, reliable and the easiest way to join both Irish heavy gauge and metric polyethylene pipes up to PN16.

They are ideal for new pipe connections and for the repair and maintenance of existing pipelines.

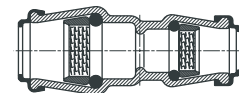
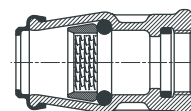
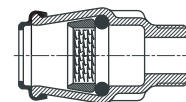
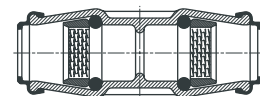
A range of fittings and sizes is available and includes the popular 1/2" Female Adaptor (Meter Box Connector), Straight Coupling and 1/2" — 3/4" Stepped Coupling.



Hawle push-fit pipe connectors are part of the High Quality Hawle Range of water pipeline fittings and come with a 10-year warranty

BENEFITS

- 1 Simple Push-Fit Connection
no other fittings, wrench, or plumbing tape required
- 2 Quick Connection
ideal for wet and congested trench conditions
- 3 Leak-Free Connection
seals under zero pressure and continues to tighten as water pressure increases
- 4 High Material Specification
robust construction of Body and Grip Ring for resistance to chemicals and corrosion
- 5 Universal fittings suit both Irish 1/2" heavy gauge pipes and 20mm metric PE pipes
- 6 Fittings can be easily dismantled, if required



In Ireland today the use of 20mm blue MDPE pipes for service connections continues to grow and differs in size from the traditional black 21mm heavy gauge pipe.

With Hawle's push-fit pipe connectors both pipes can be joined using the same fitting.

Using Hawle push-fit connectors brings additional benefits and savings, including less stock, fewer errors and no on-site confusion.

to order:

TEL: 041 983 2591

FAX: 041 983 2599

IPL group

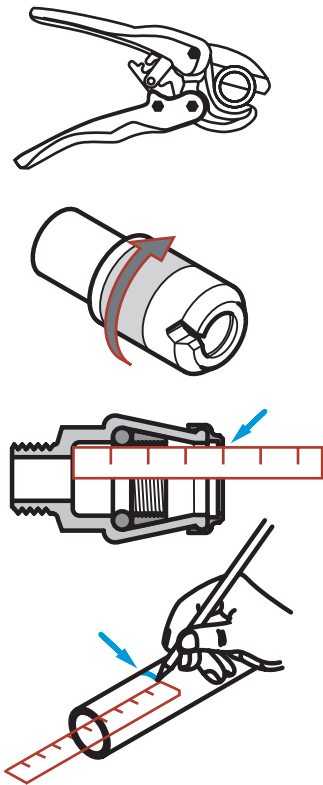
Industrial Plant Ltd.
Innovative Products Ltd.

Slane Road, Drogheda,
Co. Louth, Ireland.
Tel: +353 41 983 2591
Fax: +353 41 983 2599
Email: info@ipl.ie
Website: www.iplgroup.com

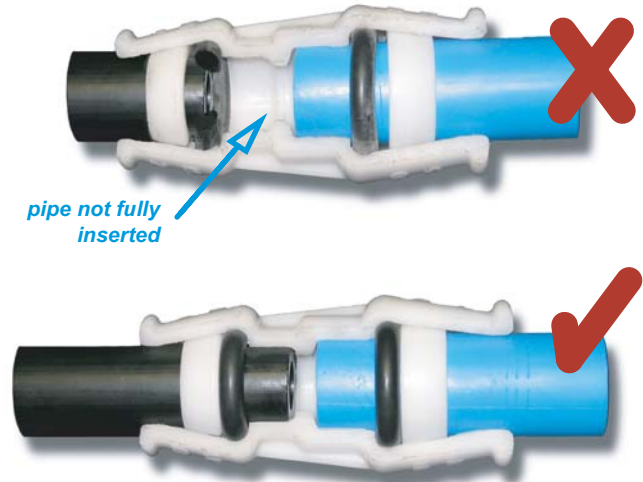
www.iplgroup.com



push-fit pipe connectors

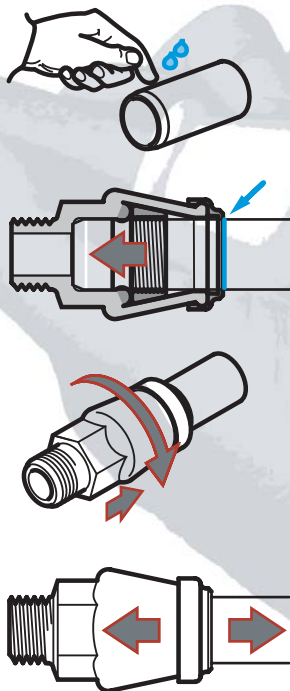


QUICK & SIMPLE PUSH-FIT CONNECTION



ENSURE PIPE IS FULLY INSERTED FOR LEAK-FREE CONNECTION

the easiest way to join polyethylene pipes



instructions

ASSEMBLY

Ensure pipe is not scored or scratched. Pipe should be clean-cut and bevelled to remove any sharp edges. Check insert distance and integrity of fitting. Moisten pipe with water (not oil). Push the pipe fully into the fitting with a slight twist. Ensure that the pipe is inserted the full distance and is seated correctly.

DISMANTLING

Slide extractors in and withdraw the pipe. Extract the grip ring with a screwdriver. (Do not reuse the grip ring.) Extract and inspect the 'O' ring. Replace 'O' ring if damaged. Insert a new grip ring by forming a figure '6' and pressing it in. Ensure that the grip ring is inserted the correct way round.