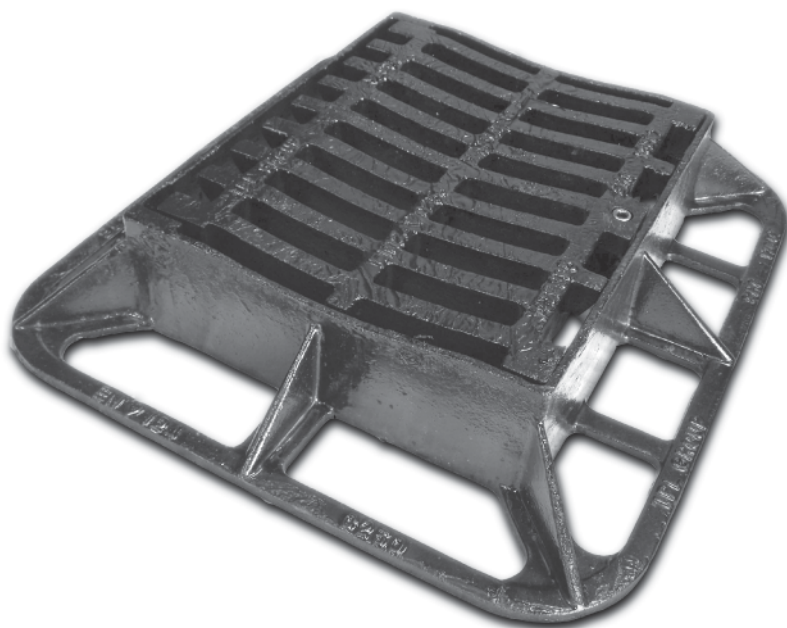
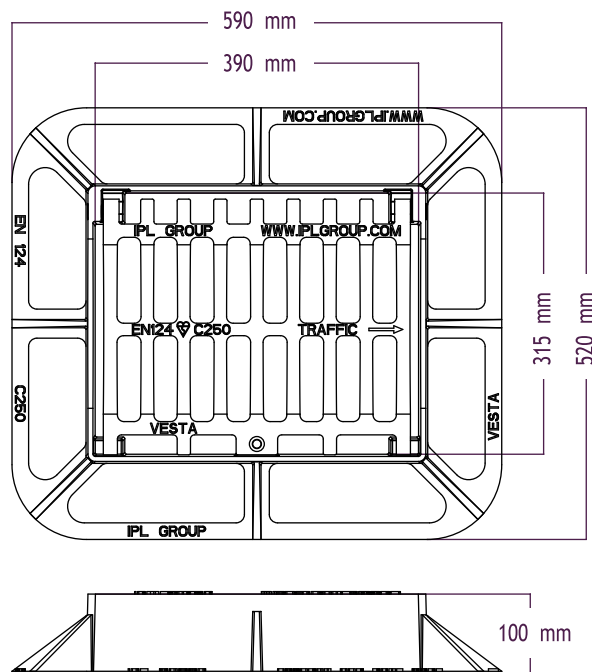


Specification

- ◆ Ductile Iron (Spheroidal Graphite)
- ◆ EN124 - Class C250 (Product Standard)
- ◆ Kitemark (BSI Certification)
- ◆ CE Mark (EC Council Directive 89/106/EEC)

Features

- ◆ Single Hinged Cover
- ◆ Non-Rock Action
- ◆ Concave Grating
- ◆ Locking Bolt
- ◆ Full Frame Flange
- ◆ Recessed Side Hinge
- ◆ Black Bitumen Coated
- ◆ Customised Locking Option



Product Code
C-VC250CG



IPL group

Industrial Plant Ltd.
Innovative Products Ltd.

Slane Road, Drogheda,
Co. Louth, Ireland.
Tel: +353 41 983 2591
Fax: +353 41 983 2599
Email: info@ipl.ie
Website: www.iplgroup.com

Technical Data

| EN124 Class | Frame Opening (mm) | Frame Size (mm) | Frame Depth (mm) | Weight (kg) | Waterway Area |
|-------------|--------------------|-----------------|------------------|-------------|--------------------|
| C250 | 390x315 | 590x520 | 100 | 31 | 725cm ² |

Group 3: For gully tops installed in the area of kerbside channels of roads which when measured from the kerb edge, extends a maximum of 0.5m into the carriageway and a maximum of 0.2m into the footway.



Measurements and weights are approx. The designs are the property of Innovative Products Ltd (IPL group) and may not be reproduced without express permission. Innovative Products reserve the right to amend specifications or to withdraw models without prior notice. © July 2007.